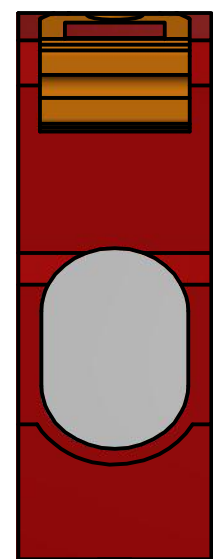
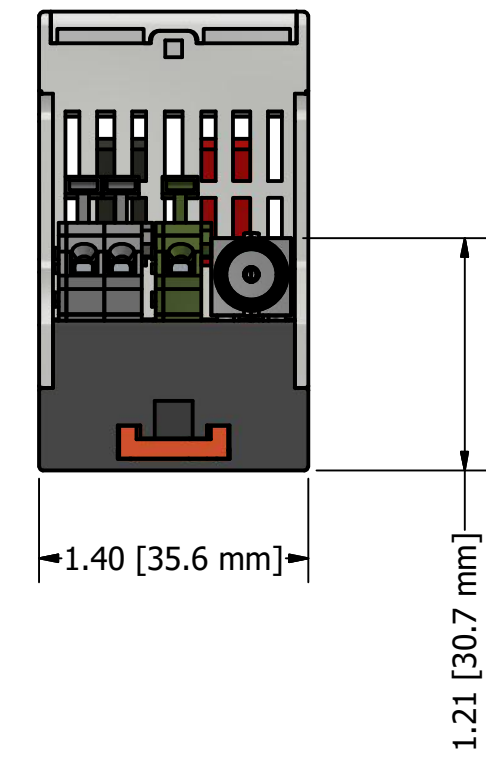
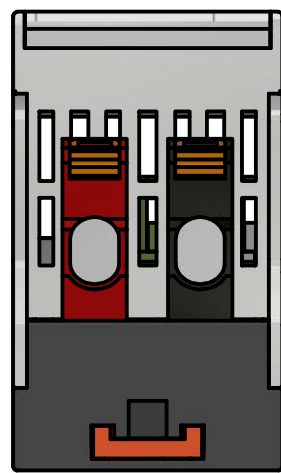
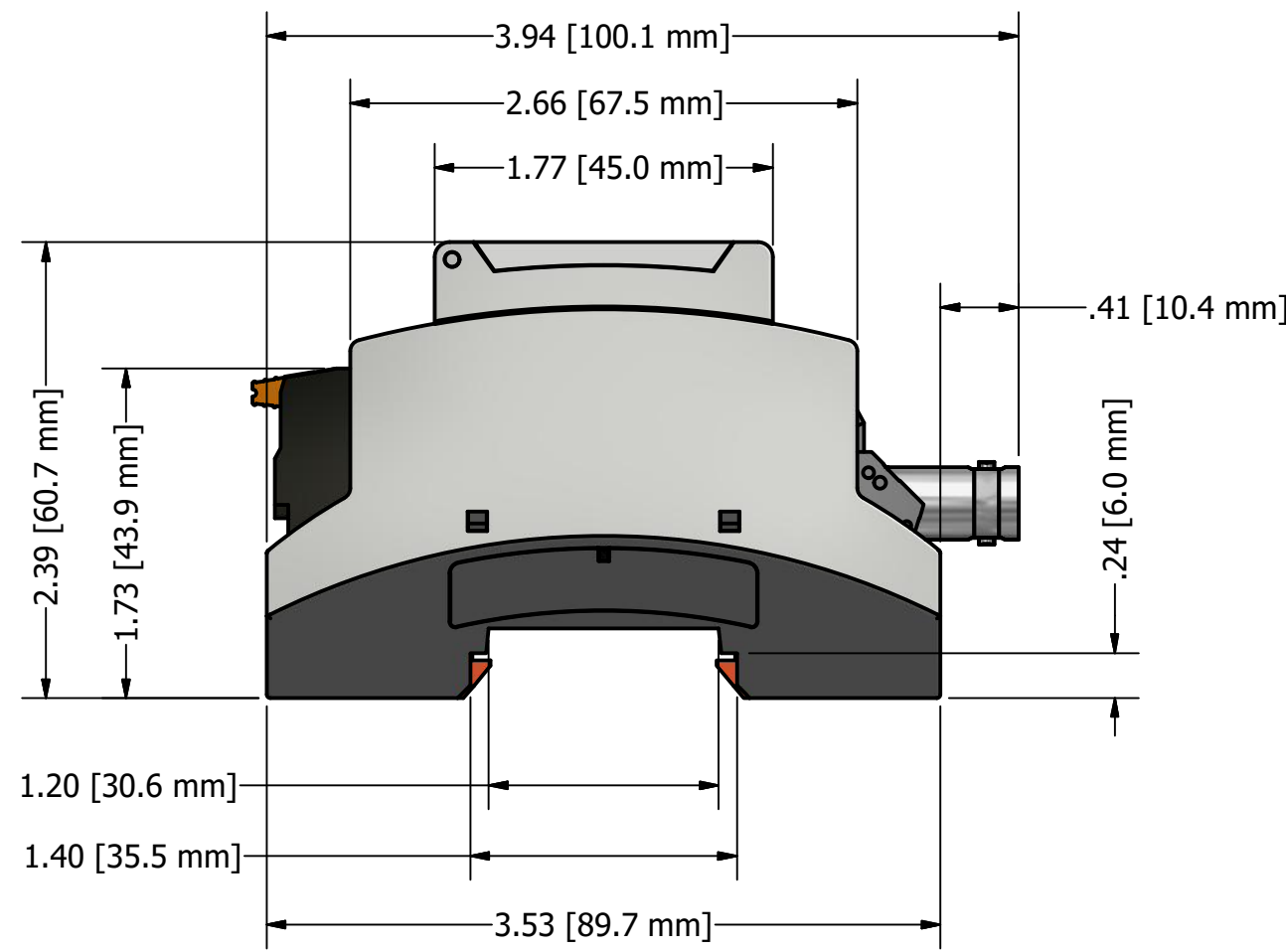
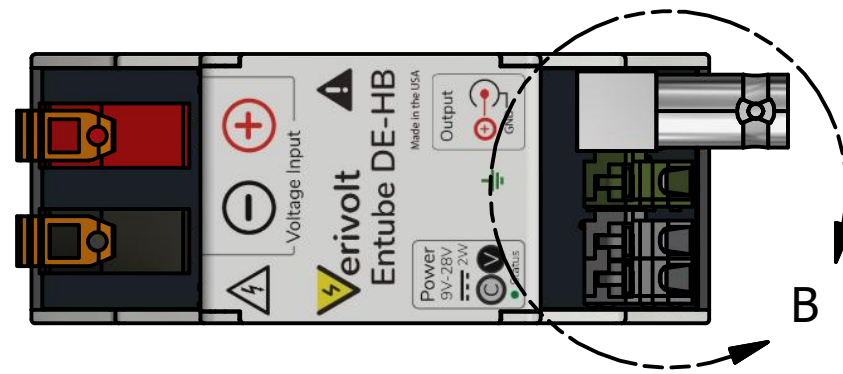
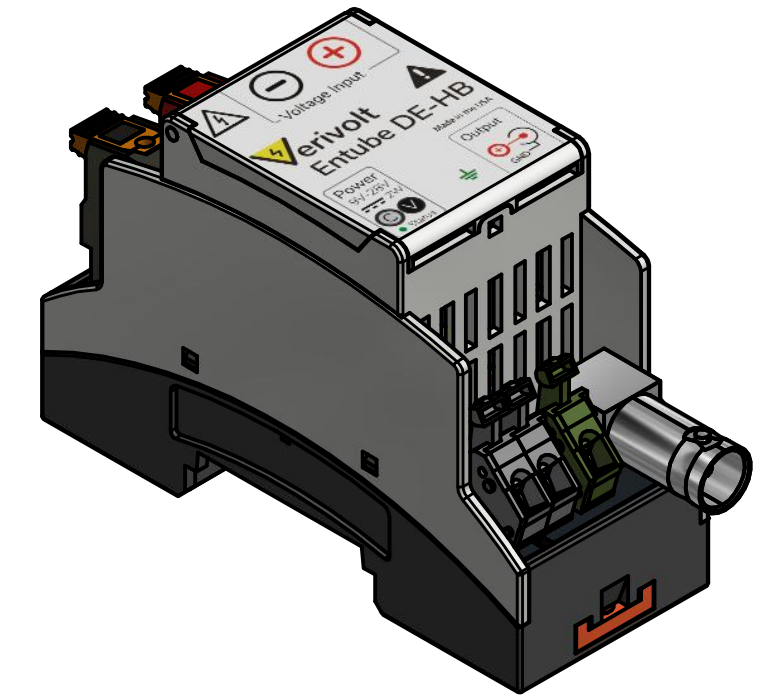
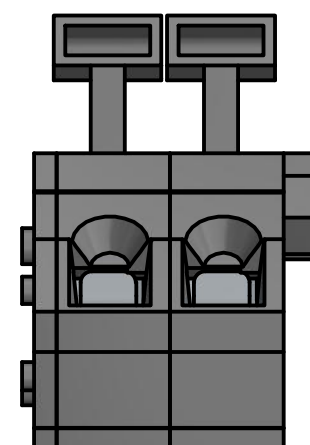


DETAIL B  
SCALE 2 : 1

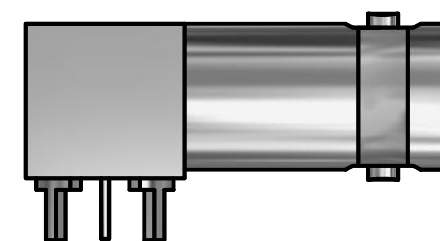



Conductor cross section AWG min.24  
 Conductor cross section AWG max.10  
 Conductor cross section min.0.2 mm<sup>2</sup>  
 Conductor cross section max.6 mm<sup>2</sup>  
 Stripping length 12 mm  
 Rated surge voltage (III/3) 8 kV

Conductor cross section solid min.0.2 mm<sup>2</sup>  
 Conductor cross section solid max.1.5 mm<sup>2</sup>  
 Conductor cross section AWG min.24  
 Conductor cross section AWG max.16  
 Stripping length 8 mm



RF Connector Type BNC  
 Connector Style Jack  
 PCB Mounting Orientation Right Angle  
 Dielectric Material PTFE



DRAWN	2/22/2019						
CHECKED					TITLE		
QA					Entube DE-HB-S-BNC		
MFG					SIZE	DWG NO	REV
APPROVED		C	Entube DE-HB-S-BNC				
		SCALE	SHEET 1 OF 1				