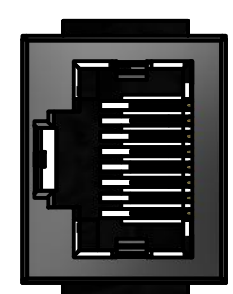
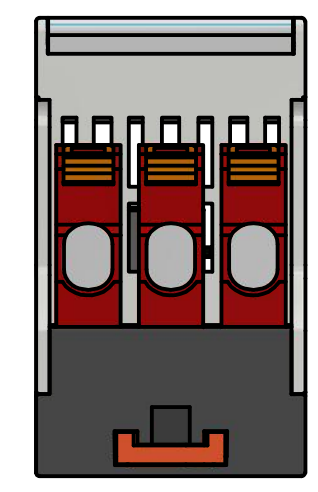
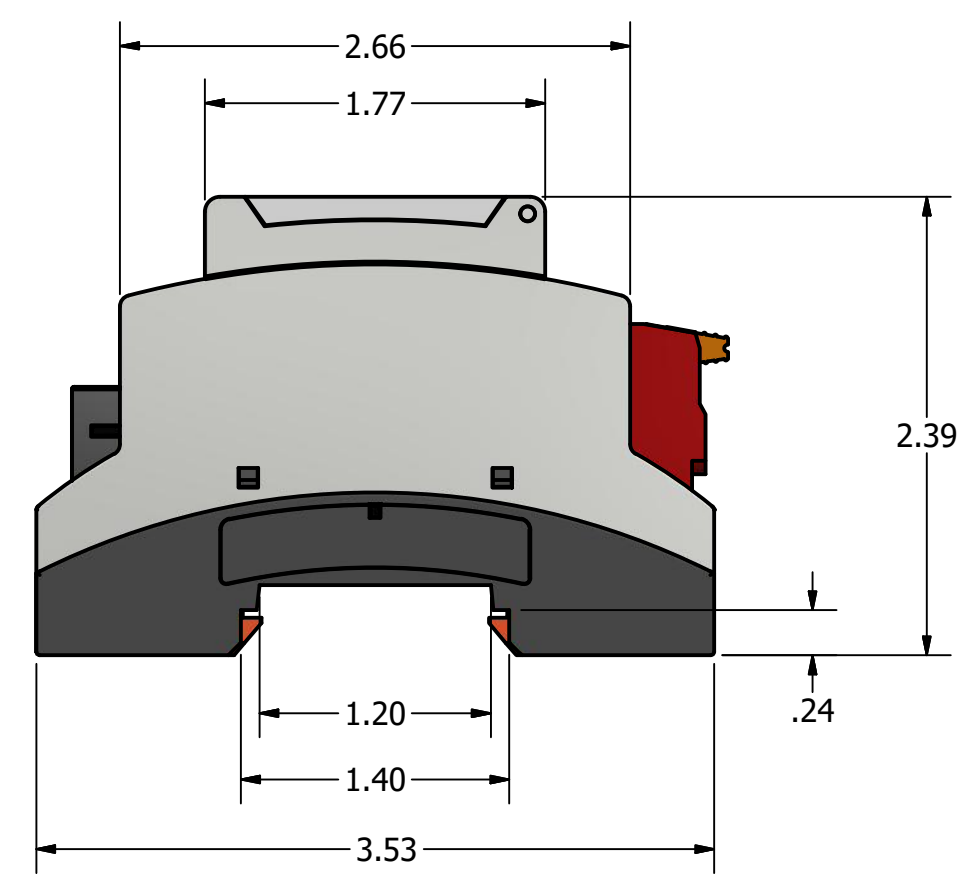
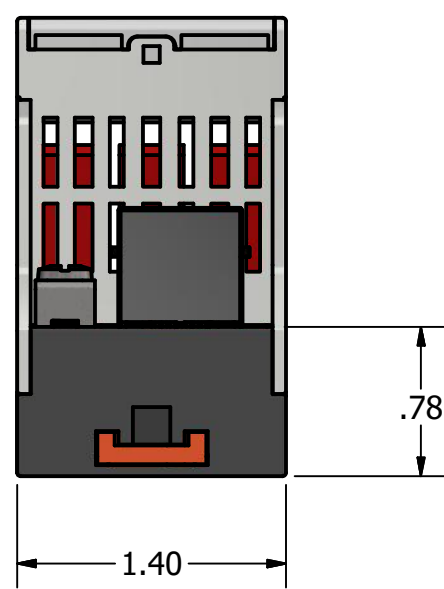
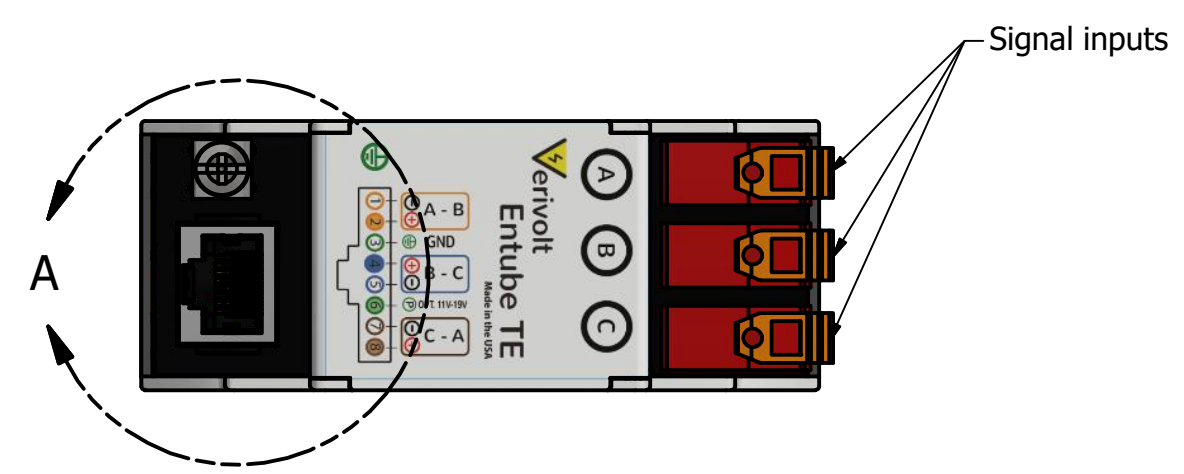
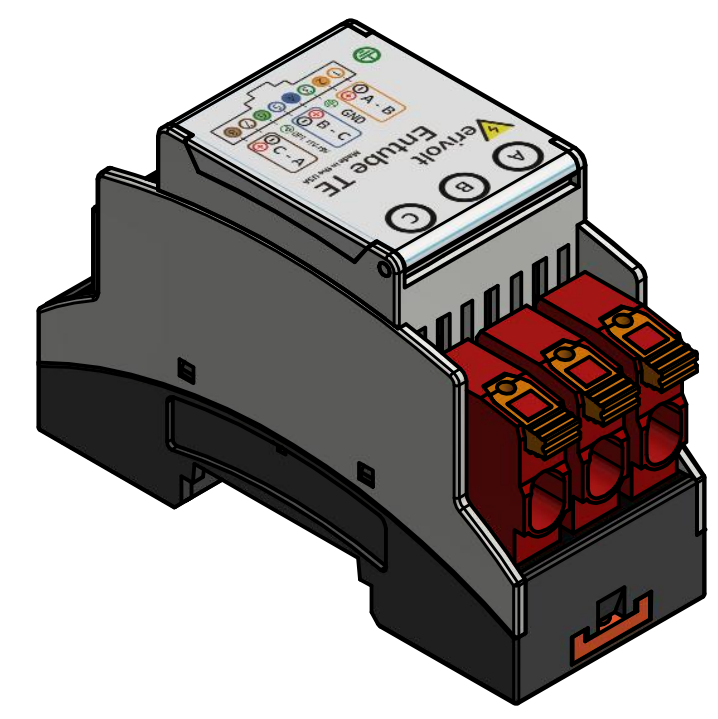
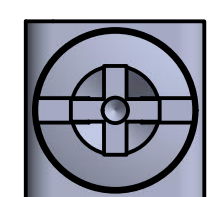


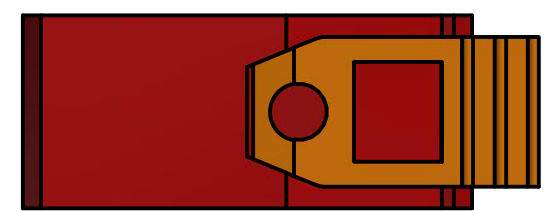
DETAIL A
SCALE 2 : 1




RJ45
Housing Material: Polyamide (PA), Nylon
Contact Finish: Gold
Durability: 750 mating cycles minimum



Ground lug
6/32 x 1/4L Screw
0.31" square surface
Brass, Nickel plate



Conductor cross section AWG min.24
Conductor cross section AWG max.10
Conductor cross section min.0.2 mm²
Conductor cross section max.6 mm²
Stripping length 12 mm
Rated surge voltage (III/3) 8 kV

DRAWN	2/22/2019			
CHECKED				
QA		Entube TE		
MFG		SIZE	DWG NO	REV
APPROVED		C		
		SCALE	SHEET 1 OF 1	